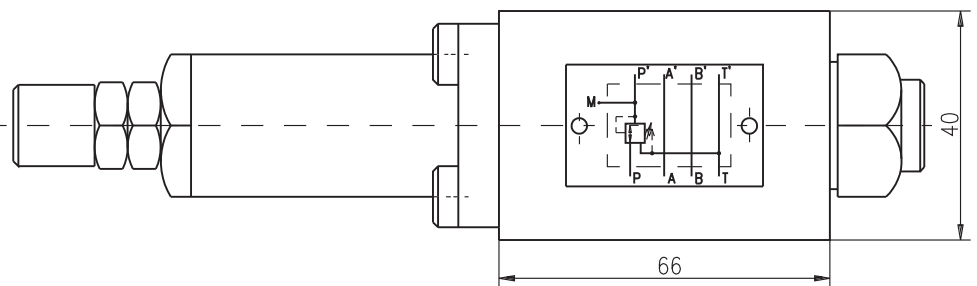
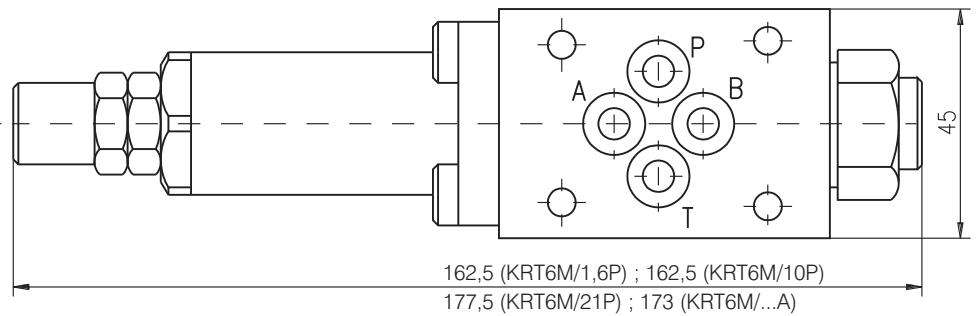


**DESCRIPTION**

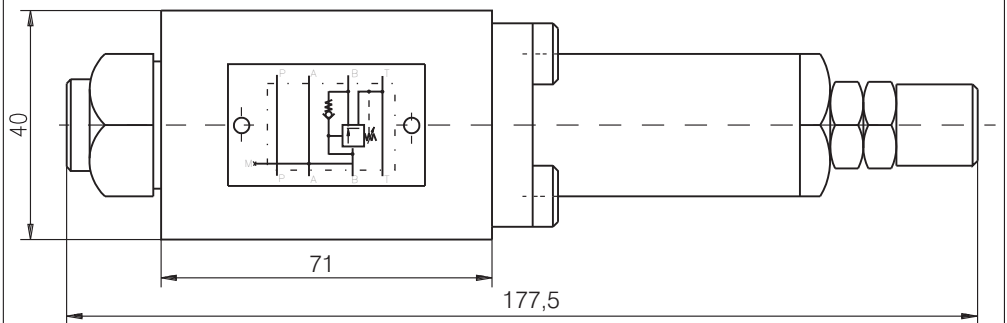
- ✓ Pressure reducing valves for modular mounting-KRT6M/...
- ✓ The pressure reducing valves are used to limit the pressure in the separate sections of the hydraulic systems where constant pressure is achieved (at element outlet) lower than the inlet pressure and independent of its changing.
- ✓ Mounting surface CETOP3 (NG6)

**DIMENSIONS**

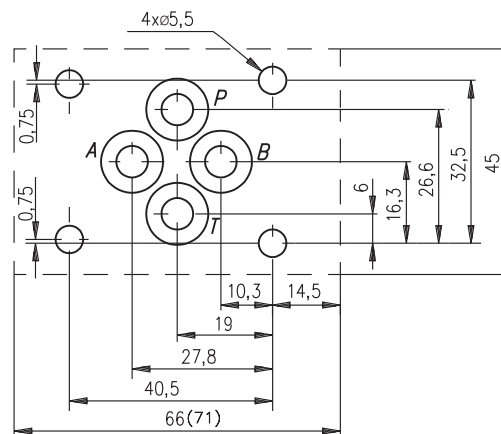
KRT6M/1,6P ; KRT6M/10P ; KRT6M/21P ; (KRT6M/...A)

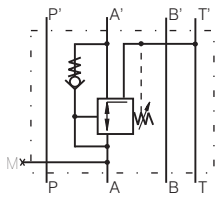
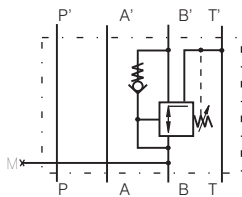
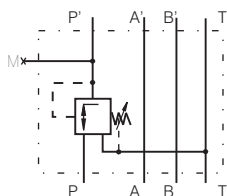


KRT6M/...B



**Mounting surface**



**SYMBOL**
**ORDERING CODE**

**KRT6M/10A**

**KRT6M/10B**

**KRT6M/...P**

KRT	6	M	/	***	***
-----	---	---	---	-----	-----

Pressure reducing valve

Nominal bore 6mm.

Modular mounting

 Pressure reducing range:
 

up to 16 bar.-	<b>1,6</b>
up to 100 bar.-	<b>10</b>
up to 210 bar.-	<b>21</b>

 Function - Pressure reducing
 

in line P to P' -	<b>P</b>
in line A' to A -	<b>A</b>
in line B' to B -	<b>B</b>

**TECHNICAL DATA**

Weight	1,165 kg	
	1,4 kg (KRT6M/21P)	
Max. inlet pressure	320 bar	
Rated flow ( $\Delta p=2,5\text{bar}$ )	20 l/min	
	Pressure reducing range:	Safety pressure range:
KRT6M/1,6P	0,8...16 bar	3...16 bar
KRT6M/10P	10...100 bar	20...100 bar
KRT6M/21P	20...210 bar	30...210 bar
KRT6M/10A	10...100 bar	20...100 bar
KRT6M/10B	10...100 bar	20...100 bar
Working liquid-hydraulic oils with characteristics:		
	-viscosity	10...400 cSt
	-degree of filtration	0,025 mm
	-temperature	-20...+80°C