

**GENERAL DESCRIPTION**

List: RH10-4F-1-May 2016

- ✓ 4/2- way directional control valves with mechanical operation
- ✓ Reliability and long life
- ✓ Mounting surface CETOP5 (NG10)

# RH10...4F...

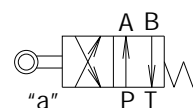


These RH10...4F... valves consist of a spool, housing, springs and mechanical control unit. They are used to control the start, stop and direction of flow.

The valves are used for hydraulic power control. This model is designed with two-spring centered spool.

The housing has 5-chambers and vertical "T" duct.

The valve location during assembly is of minor importance, but the horizontal position is generally recommended.

**Symbol**

**ORDERING CODE**

RH	10	...	4	F	...	...
----	----	-----	---	---	-----	-----

Directional control valve

Nominal size

Functional symbol

see page 2/3

Type of control: - mechanical

Backing of the housing

**N** - normal

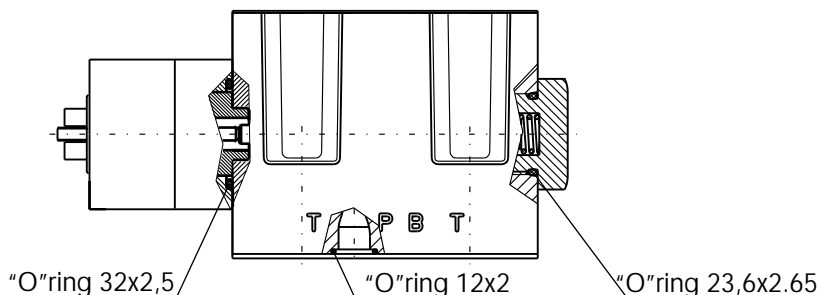
**T** - tropical

Modification

**TECHNICAL DATA**

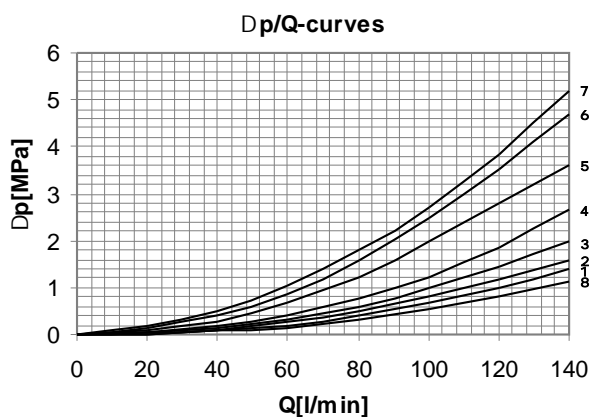
DATA	UNIT	VALUE/RANGE
Weight	kg	4
Max. Pressure	MPa	32 16
Rated flow	l/min	15...45
Actuating force	N	50 150





CHARACTERISTICS

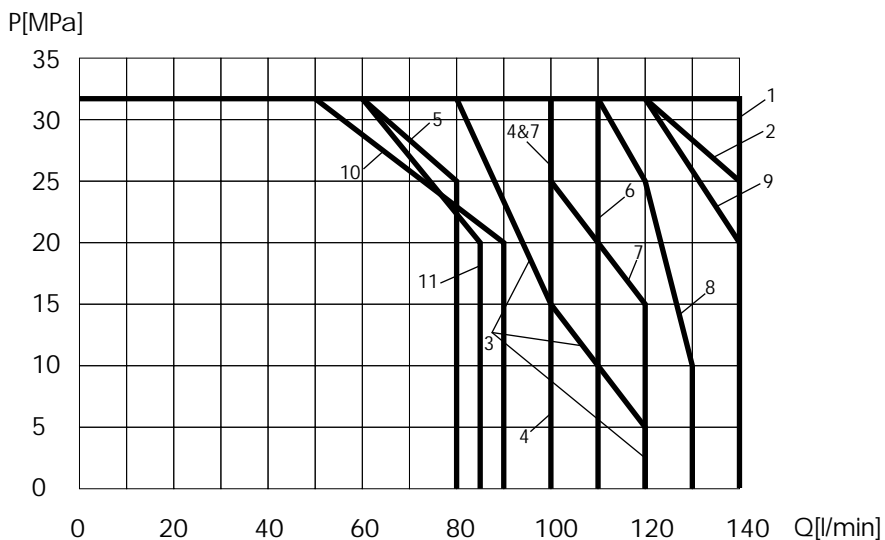
Dp/Q



SYMBOL	CURVE					SYMBOL	CURVE				
	P>A	P>B	A>T	B>T	P>T		P>A	P>B	A>T	B>T	P>T
00	3	3	8	8	4	26	3	3	2	1	
01	3	3	1	1		27	3			1	
02	6	6	5	5	4	28	3	3	2	2	
04	3	3	2	2		32	4	4			
05	1	1	1	8		33		3	8		4
06	2	2	7	5	2	36	4	4	2	2	
08	2	2	1	1		39	4	4	2	2	
10	2	2	1	1		40		4	1		
11	2	2	1	1		41		4	8		
12	2	2	1	1		42	3	3	2	1	
13	2	2				45		2	1		
14	6			5	4	61	4			8	
16	2			1		62	4			1	
17		1	1			64	2			1	
18	2	2	1	1		68	4	4			
20	3	3	2	2		70	3	3	2	1	
21	2	2	1	1		83		2	1		
24	3	3	2	2							

p/Q

The operating limit of hydraulic power shown here is for applications with two directions of flow (e.g. from P to B and simultaneously from A to T). If the valve is with one direction passage only (e.g. from P to B and with blocked port A), the operating limit may considerably be reduced. The performance limits are measured with hydraulic oil 35±5 cSt and temperature 50 °C.



SYMBOL	CURVE	SYMBOL	CURVE
00	1	26	8
01	2	27	1
02	11	28	9
04	9	32	3
05	1	33	1
06	2	36	5
08	2	39	5
10	1	40	6
11	1	41	7
12	1	42	8
13	2	45	2
14	11	61	7
16	2	62	6
17	1	64	2
18	2	68	3
20	2	70	8
21	4	83	2
24	9		