

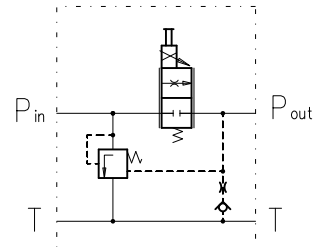
GENERAL DESCRIPTION

List: F RTP06-1-May 2016

The F RTP06... valve is used to control the speed of hydraulic actuators. This valve is designed for assembling with other valves for stackable control blocks.



Symbol



- ✓ 3- way flow regulator with proportional solenoid operation without feedback
- ✓ Removable coils-quick replacement and rotation in any directions without leakage from the system
- ✓ Manual override option (push button)

ORDERING CODE

F RTP 06 - 25 - GF

Proportional flow regulator

Nominal size

Nominal flow: 25l/min

Modification

N - normal
T - tropical

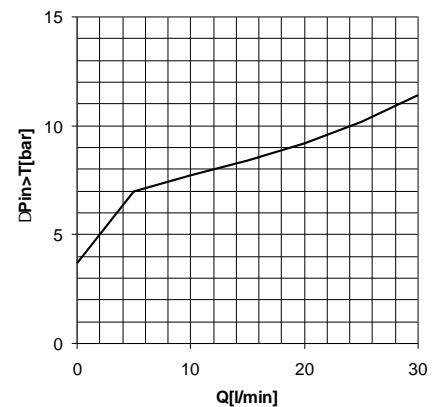
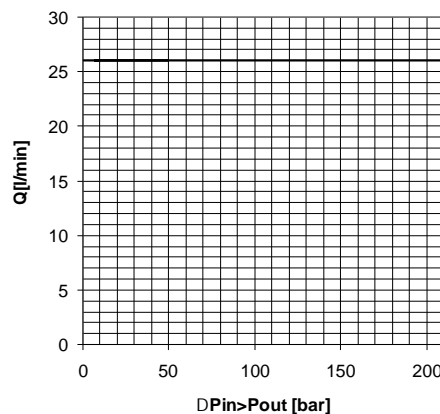
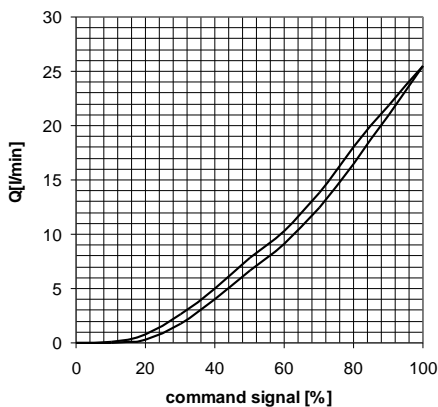
Climatic realization:

Connector:

- C1 - without connector
- C2 - with connector by DIN24650
- C3 - with connector by DIN24650 with light indicator

CHARACTERISTICS

Measured at: PWM 120Hz. , $I_{max} = 2,5A$, $I_{min} = 1A$, $t = 45^{\circ}C$



TECHNICAL DATA
GENERAL

DATA	UNIT	VALUE/RANGE
Installation position		optional , preferably horizontal
Ambient temperature range	°C	-20...+50
Weight	kg	1,600
Hysteresis	%	< 6
Repeatability	%	±1,5

HYDRAULIC

Max. operating pressure	MPa	21
Regulated flow Max. inlet flow	l/min	25 40
Hydraulic fluid-mineral oil: -viscosity -filtration degree to ISO 4406 -temperature	mm ² /s class °C	10...400 18/16/13 -20...80

ELECTRICAL

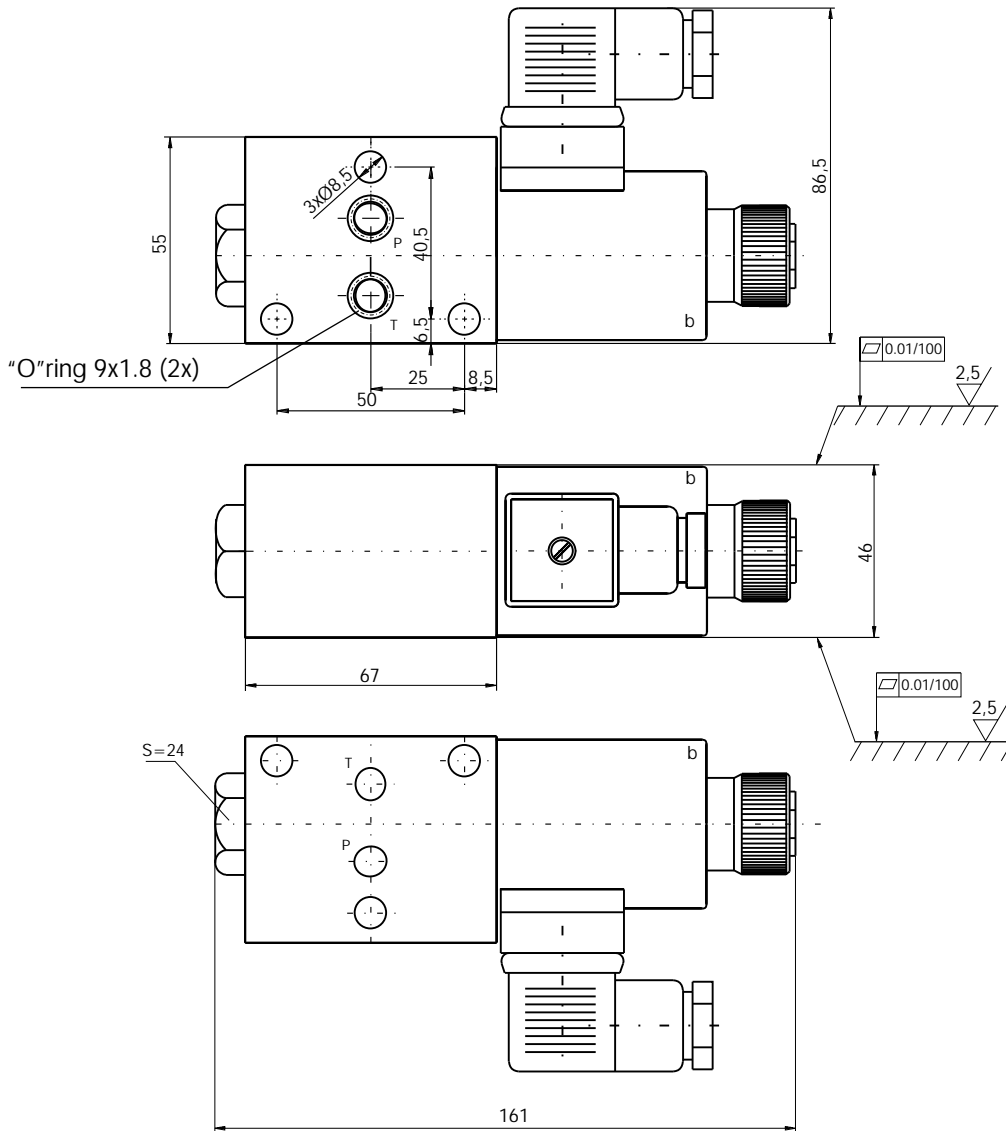
Cyclic duration	%	100
Waterproof		IP65
Heat insulation		H
Coil resistance	W	2,2 3
		cold warm
Max current	A	2,5

AMPLIFIER
EDAR 1211-1 -25 Order separately

These digital amplifier EDAR 1211-1-25 is designed to control direct operated proportional directional control valves and proportional flow regulators with one solenoid without feedback - see "List: EDAR1211-1-25".

DIMENSIONS

All dimensions are shown in mm.



HOW TO CONNECT

Connect this valve always right after inlet cover!

