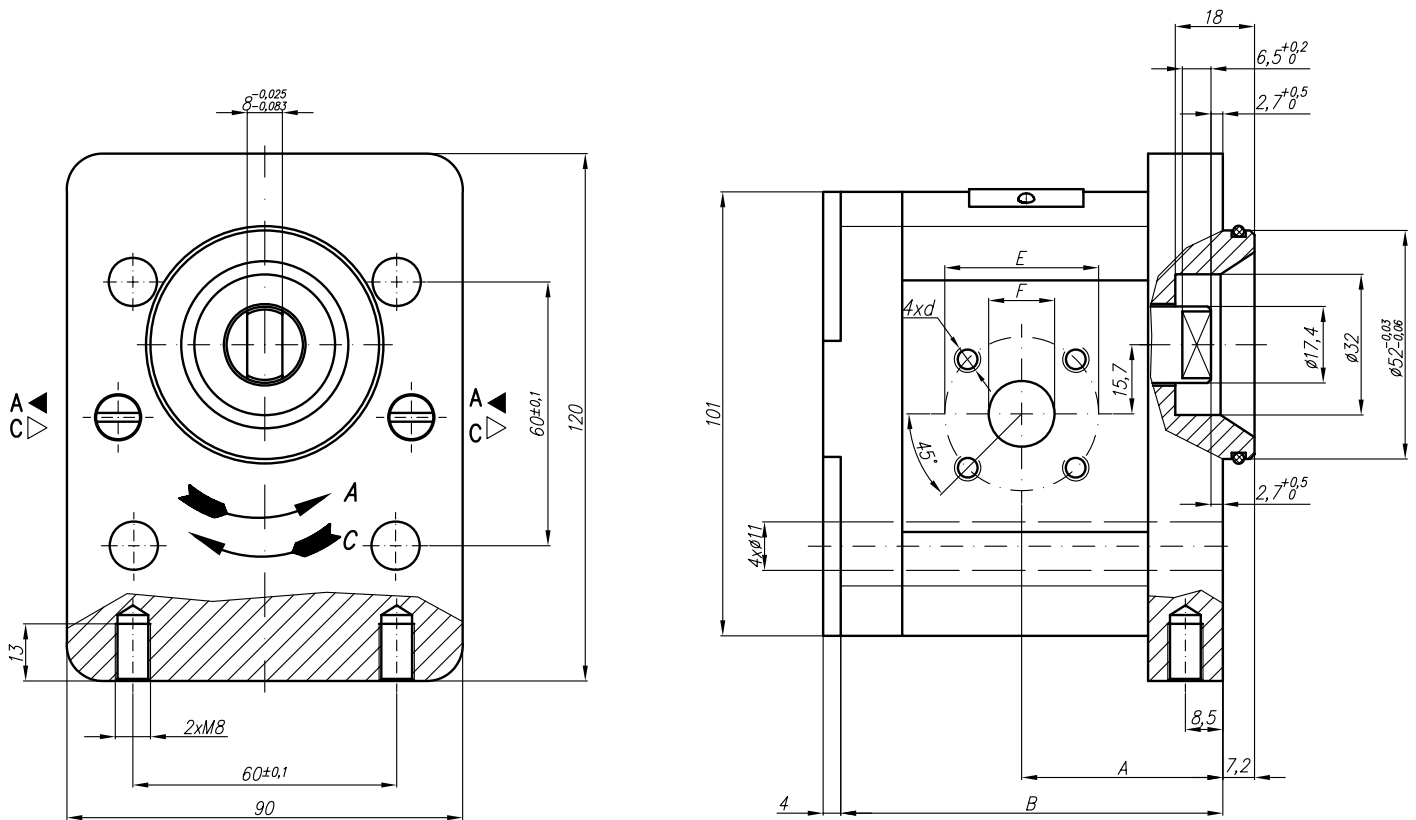
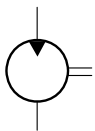


Designed as a special version motor-pump 22A(C)...X194/...X195.



Symbol



Type	Displacement cm ³ /rev	Flow		Pressure P _{nom} bar	max Speed n rpm	Dimension								
		at 1500 rpm l/min	at max rpm l/min			A mm	B mm	Inlet			Outlet			
						E	F	d	E	F	d			
20A(C)4,5X194	4,5	6,14	14,33	250	3500	37,3	78	40	20	M6-6H	35	15	M6-6H	
20A(C)6,3X194	6,3	8,69	20,29	250	3500	38,6	81							
20A(C)8,2X194	8,2	11,32	26,40	250	3500	40,6	83,9							
20A(C)10X194	10	13,95	32,55	250	3500	45	87							
20A(C)11X194	11,3	15,76	36,78	250	3500	45	89,1							
20A(C)12X194	12	16,92	39,48	250	3500	45	90,3							
20A(C)14X194	14	19,95	46,55	250	3500	45	93,4							
20A(C)15X194	15	21,60	36,00	250	2500	45	94,9							
20A(C)16X194	16	23,04	38,40	250	2500	45	96,5							
20A(C)19X194	19	27,36	45,60	200	2500	45	101,5							
20A(C)22X194	22	31,68	42,24	180	2000	52,5	106,5							
20A(C)25X194	25	36,00	48,00	160	2000	54,7	111,4							