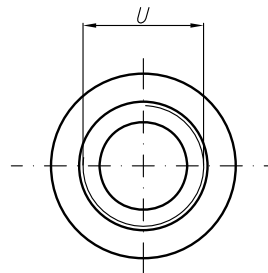
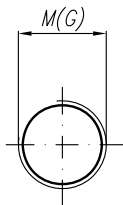


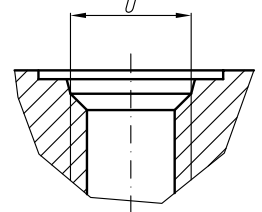
V
Variants for ports – M;G;U

Designations:

- ...X234 – Normal version (flanges);
- ...X234M – Metric threads;
- ...X234G – GAS threads;
- ...X234U – SAE threads;



SAE J475 (ISO R725)



Type	Displacement cm ³ /rev	Flow		Pressure P _{nom} bar	max Speed n rpm	Dimension														
		at 1500 rpm l/min	at max rpm l/min			A mm	B mm	Inlet					Outlet							
								E	F	d	M	G	U	E	F	d	M	G	U	
20A(C)4,5X234...	4,5	6,14	14,33	250	3500	42,5	87,2													
20A(C)6,3X234...	6,3	8,69	20,29	250	3500	42,5	87,2	30,2	13,1	M6-6H		G1/2			13,1					
20A(C)8,2X234...	8,2	11,32	26,40	250	3500	42,5	87,2													
20A(C)10X234...	10	13,95	32,55	250	3500	47	96,2													
20A(C)11X234...	11,3	15,76	36,78	250	3500	48	98,3													
20A(C)12X234...	12	16,92	39,48	250	3500	48,6	99,5													
20A(C)14X234...	14	19,95	46,55	250	3500	50	102,5													
20A(C)15X234...	15	21,60	36,00	250	2500	51	104,1	39,7	19	M8-6H	M20x1,5	G3/4	1 1/16"-12UNF	30,2	14,2	M6-6H	M16x1,5	G1/2	7/8"-14UNF	
20A(C)16X234...	16	23,04	38,40	250	2500	52	105,8													
20A(C)19X234...	19	27,36	45,60	200	2500	54	110,7													
20A(C)22X234...	22	31,68	42,24	180	2000	57	115,7													
20A(C)25X234...	25	36,00	48,00	160	2000	59,2	120,6							39,7	19	M8	M20x1,5	G1/2	7/8"-14UNF	