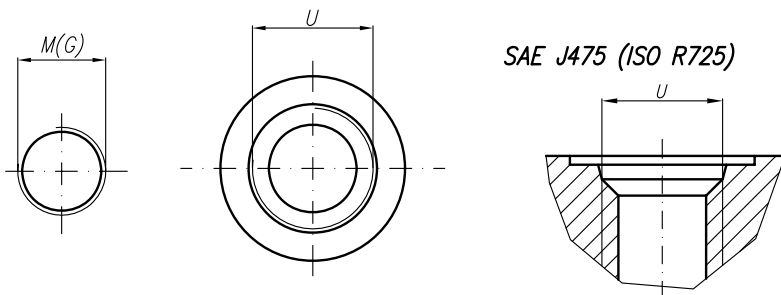


V
Variants for ports – M;G;U

Designations:

- ...X514M – Metric threads;
- ...X514G – GAS threads;
- ...X514U – SAE UNF threads;



Type	Displacement cm ³ /rev	Flow		Pressure P _{nom} bar	max Speed n rpm	Dimension								
		at 1500 rpm l/min	at max rpm l/min			A mm	B mm	Inlet			Outlet			
						M	G	U	M	G	U			
20A(C)4,5X514...	4,5	6,14	14,33	250	3500	42	86,8	M20x1,5	G1/2	1 1/16"-12UNF	M16x1,5	G1/2	7/8"-14UNF	
20A(C)6,3X514...	6,3	8,69	20,29	250	3500	43,6	86,8							
20A(C)8,2X514...	8,2	11,32	26,40	250	3500	45	86,8							
20A(C)10X514...	10	13,95	32,55	250	3500	46,6	95,8							
20A(C)11X514...	11,3	15,76	36,78	250	3500	47,6	97,9							
20A(C)12X514...	12	16,92	39,48	250	3500	48,2	99,1							
20A(C)14X514...	14	19,95	46,55	250	3500	49,6	102,1							
20A(C)15X514...	15	21,60	36,00	250	2500	50,6	103,7							
20A(C)16X514...	16	23,04	38,40	250	2500	51,6	105,3							
20A(C)19X514...	19	27,36	45,60	200	2500	53,6	110,3							
20A(C)22X514...	22	31,68	42,24	180	2000	56,6	115,3							
20A(C)25X514...	25	36,00	48,00	160	2000	58,8	120,2							