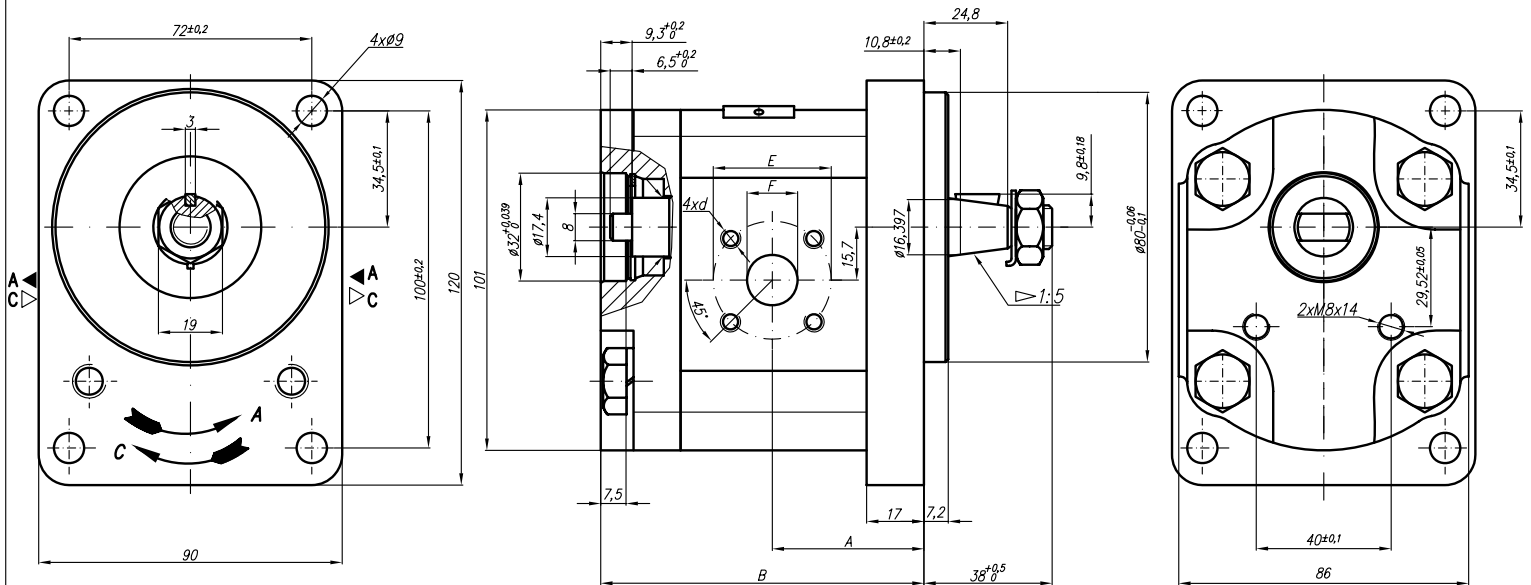


Designed as a first section of tandem gear pumps group 21A(C)...X578/... (lgroup/lgroup).



Type	Displacement cm ³ /rev	Flow		Pressure P _{nom} bar	max Speed n rpm	Dimension							
		at 1500 rpm l/min	at max rpm l/min			Inlet		Outlet					
						A mm	B mm	E	F	d	E	F	d
20A(C)4,5X578	4,5	6,14	14,33	250	3500	39,8	87,6	40	15	M6-6H	35	15	M6-6H
20A(C)6,3X578	6,3	8,69	20,29	250	3500	41	90,6						
20A(C)8,2X578	8,2	11,32	26,40	250	3500	43,1	93,5						
20A(C)10X578	10	13,95	32,55	250	3500	47,5	96,6						
20A(C)11X578	11,3	15,76	36,78	250	3500	47,5	98,7						
20A(C)12X578	12	16,92	39,48	250	3500	47,5	99,9						
20A(C)14X578	14	19,95	46,55	250	3500	47,5	103						
20A(C)15X578	15	21,60	36,00	250	2500	47,5	104,5						
20A(C)16X578	16	23,04	38,40	250	2500	47,5	106,2						
20A(C)19X578	19	27,36	45,60	200	2500	47,5	111,1						
20A(C)22X578	22	31,68	42,24	180	2000	55	116,1						
20A(C)25X578	25	36,00	48,00	160	2000	57,2	121,1						