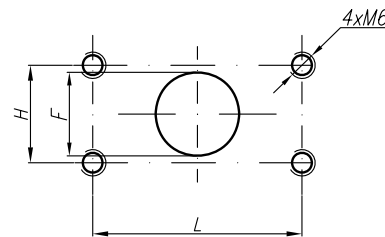


At pump displacement above 10ccm the Inlet port is rotated:



Type	Displacement cm ³ /rev	Flow		Pressure P _{nom} bar	max Speed n rpm	Dimension							
		at 1500 rpm l/min	at max rpm l/min			Inlet			Outlet				
						A mm	B mm	H mm	L mm	F mm	H mm	L mm	F mm
20A(C)4,5X654	4,5	6,14	14,33	250	3500	40,5	85,2	38,1	17,4	15	38,1	17,4	15
20A(C)6,3X654	6,3	8,69	20,29	250	3500	42	88,2						
20A(C)8,2X654	8,2	11,32	26,40	250	3500	43,5	91,1						
20A(C)10X654	10	13,95	32,55	250	3500	45	94,1						
20A(C)11X654	11,3	15,76	36,78	250	3500	46	96,2						
20A(C)12X654	12	16,92	39,48	250	3500	46,5	97,5	22,2	47,6	19			
20A(C)14X654	14	19,95	46,55	250	3500	48	100,6						
20A(C)15X654	15	21,60	36,00	250	2500	49	102,1						
20A(C)16X654	16	23,04	38,40	250	2500	50	103,8						
20A(C)19X654	19	27,36	45,60	200	2500	52	108,7						
20A(C)22X654	22	31,68	42,24	180	2000	55	113,7	25					
20A(C)25X654	25	36,00	48,00	160	2000	57,2	118,5						