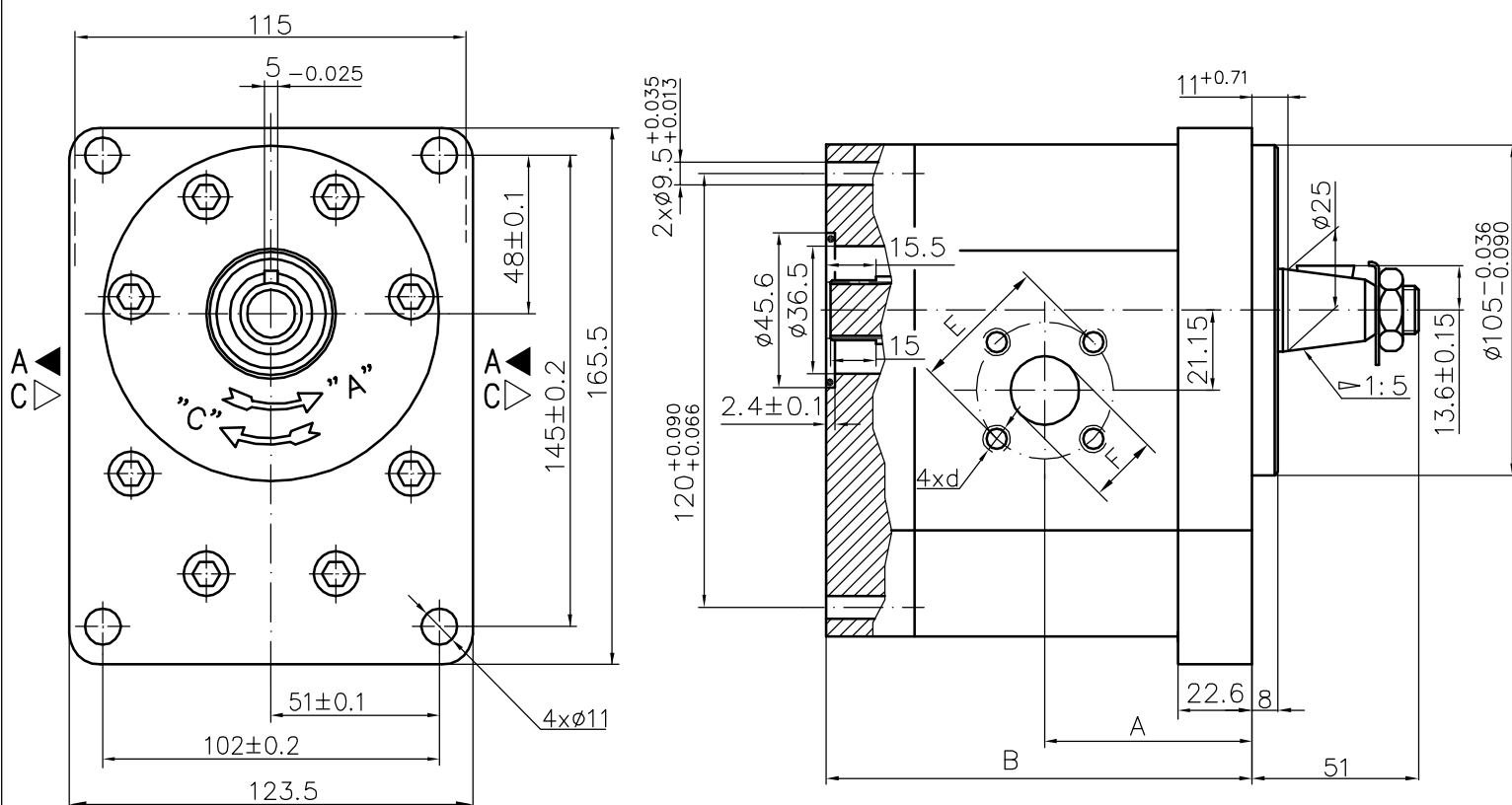


Designed as a first section of multiple pumps group 33.



Type	Displacement cm ³ /rev	Flow		Pressure P _{nom} bar	max Speed n rpm	Dimension								
		at 1500 rpm l/min	at max rpm l/min			A mm	B mm	Inlet			Outlet			
								E	d	F	E	d	F	
30A(C)20X338H	20	28,2	56,4	250	3000	56,1	114,7	40	M8	19	40	M8	19	
30A(C)22,2X338H	22,5	31,7	63,5	250	3000	57,6	117,7							
30A(C)25X338H	25	35,3	70,5	250	3000	58,3	119,1							
30A(C)28X338H	28	39,5	79,0	250	3000	60,2	122,7							
30A(C)32X338	32	45,1	75,2	250	2500	62,0	126,3							
30A(C)32X338H	32	45,1	90,2	250	3000	66,5	135,3	55	M8	27	55	M8	19	
30A(C)36X338	36	50,8	84,6	250	2500	63,5	129,4							
30A(C)36X338H	36	51,3	95,8	250	2800	68,0	138,5							
30A(C)42X338	42	59,9	91,8	230	2300	66,3	135,0							
30A(C)42X338H	42	59,9	99,8	230	2500	70,8	144,0							
30A(C)46X338H	46	65,6	100,5	230	2300	72,7	147,8	55	M8	27	55	M8	19	
30A(C)50X338H	50	71,3	99,8	200	2100	74,5	151,4							
30A(C)55X338H	55	78,4	91,4	200	1750	76,7	155,9							
30A(C)60X338H	60	85,5	99,8	180	1750	78,7	160,4							