

DESCRIPTION

A solenoid-operated, 4-way, 2-position, direct-acting, spool-type, screw-in, hydraulic cartridge valve.

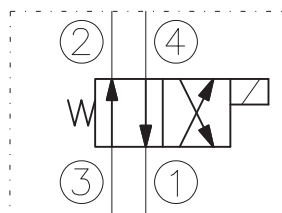
OPERATION

When de-energized, the EV08-4A allows flow from 3 to 2, and from 4 to 1. When energized, the valve's spool shifts to open from 3 to 4, and from 2 to 1. All ports are open at cross-over.

RATINGS

- Operating Pressure: 210bar
- Flow: 8 l/min max.
- Internal Leakage: 82 cc/minute max. at 210bar
- Temperature: -20°C to 90°C with standard Buna N seals
- Coil Duty Rating: Continuous from 85% to 115% of nominal voltage
- Minimum Pull-in Voltage: 85% of nominal at 210bar
- Filtration: Recommended 25µm nominal or better
- Fluids: Mineral-based or synthetics with lubricating properties at viscosities of 7,4 to 420 cSt
- Installation: No restrictions
- Cavity: CC08-4 ; See "CAVITIES AND BODIES" brochure

SYMBOL



CAVITY

See "CAVITIES AND BODIES" brochure

TO ORDER

EV08-4A

Voltage	Seals
0 - Without coil	N - Buna N
12 - 12V DC	V - Viton A
24 - 24V DC	
11 - 110V RAC	
22 - 220V RAC	

Terminations DIN 43650.
See "Accessories" brochure

PERFORMANCE (Cartridge Only)

