

## DESCRIPTION

A solenoid-operated, 2-way, piloted, poppet-type, normally open, screw-in, hydraulic cartridge valve designed for low leakage in load-holding applications.

## OPERATION

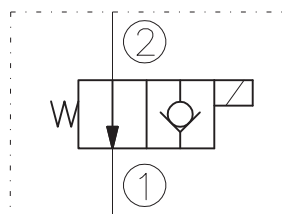
When de-energized, the EV10-2A allows flow from 2 to 1. Flow from 1 to 2 is severely restricted in this mode.

When energized, the valve's poppet closes on its seat, blocking flow from 2 to 1. In this mode the cartridge will allow 1 to 2 flow after overcoming the solenoid force.

## RATINGS

- Operating Pressure: 250bar
- Flow: See Performance Chart
- Internal Leakage: 0,25 cc/minute max. at 210bar
- Temperature: -20°C to 90°C with standard Buna N seals
- Coil Duty Rating: Continuous from 85% to 115% of nominal voltage
- Minimum Pull-in Voltage: 85% of nominal at 210bar
- Filtration: Recommended 25µm nominal or better
- Fluids: Mineral-based or synthetics with lubricating properties at viscosities of 7,4 to 420 cSt
- Installation: No restrictions
- Cavity: CC10-2 ; See "CAVITIES AND BODIES" brochure

## SYMBOL



## CAVITY

See "CAVITIES AND BODIES" brochure

## TO ORDER

EV10-2A

<p><b>Voltage</b></p> <ul style="list-style-type: none"> <li>0 - Without coil</li> <li>12 - 12V DC</li> <li>24 - 24V DC</li> <li>11 - 110V RAC</li> <li>22 - 220V RAC</li> </ul>	<p><b>Seals</b></p> <ul style="list-style-type: none"> <li>N - Buna N</li> <li>V - Viton A</li> </ul>
--	---

Terminations DIN 43650.  
See "Accessories" brochure

## PERFORMANCE (Cartridge Only)

