

DESCRIPTION

A solenoid-operated, 2-way, direct-acting, spool-type, normally closed, screw-in, hydraulic cartridge valve designed to operate as a bidirectional blocking valve.

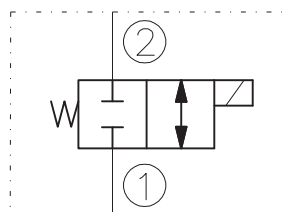
OPERATION

When de-energized, the EV10-2LF blocks flow in both directions. When energized, the valve's spool shifts to open the bidirectional flow path.

RATINGS

- Operating Pressure: 210bar
- Flow: See Performance Chart
- Internal Leakage: 82 cc/minute max. at 210bar
- Temperature: -20°C to 90°C with standard Buna N seals
- Coil Duty Rating: Continuous from 85% to 115% of nominal voltage
- Minimum Pull-in Voltage: 85% of nominal at 210bar
- Filtration: Recommended 25µm nominal or better
- Fluids: Mineral-based or synthetics with lubricating properties at viscosities of 7,4 to 420 cSt
- Installation: No restrictions
- Cavity: CC10-2 ; See "CAVITIES AND BODIES" brochure

SYMBOL

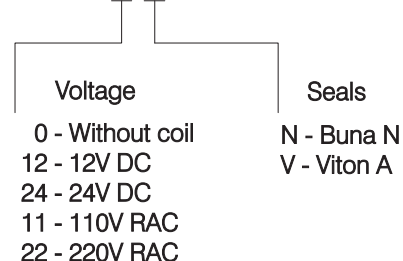


CAVITY

See "CAVITIES AND BODIES" brochure

TO ORDER

EV10-2LF



Terminations DIN 43650.
See "Accessories" brochure

PERFORMANCE (Cartridge Only)

