

GENERAL DESCRIPTION

List: RH10-7F-1-May 2016

✓ 4/3- and 4/2- way directional control valves with manual operation

✓ Reliability and long life

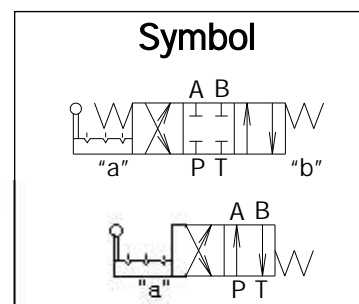
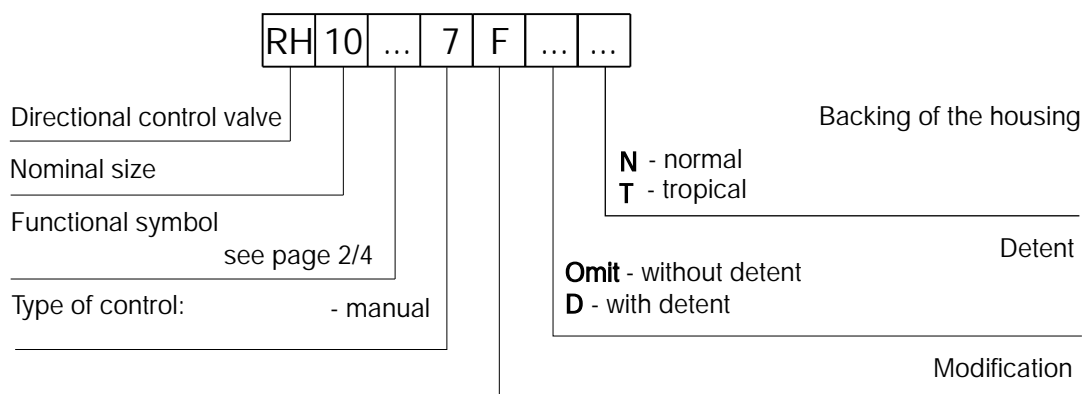
✓ Mounting surface CETOP5 (NG10)

The RH10...7F... valves consist of a spool, housing, springs and manual control unit. They are used to control the start, stop and direction of flow.

This model is designed with two-spring centered spool about 4/3- and 4/2- valves. The housing has 5-chambers. There are two possible versions of valve - with detent and without detent.

The valve location during assembly is of minor importance, but the horizontal position is generally recommended.

RH10...7F...


ORDERING CODE

TECHNICAL DATA

DATA	UNIT	VALUE/RANGE
Weight	kg	5,1
Max. pressure port P, A & B port T	MPa	32 2,5
Rated flow (at $D_p=0,1\text{MPa}$)	l/min	15...45
Angular movement	°	±29
Actuating force	N	30

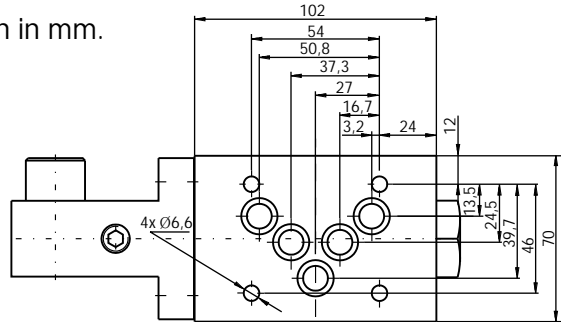
FUNCTIONAL SYMBOLS

DESIG-NATION	SYMBOL	INTERMEDIATE	DESIG-NATION	SYMBOL	INTERMEDIATE
00			27		
01			28		
02			32		
04			33		
05			35		
06			36		
10			39		
11			40		
12			41		
13			42		
14			45		
16			61		
17			62		
18			64		
21			68		
24			70		
26			83		

Other symbols on request.

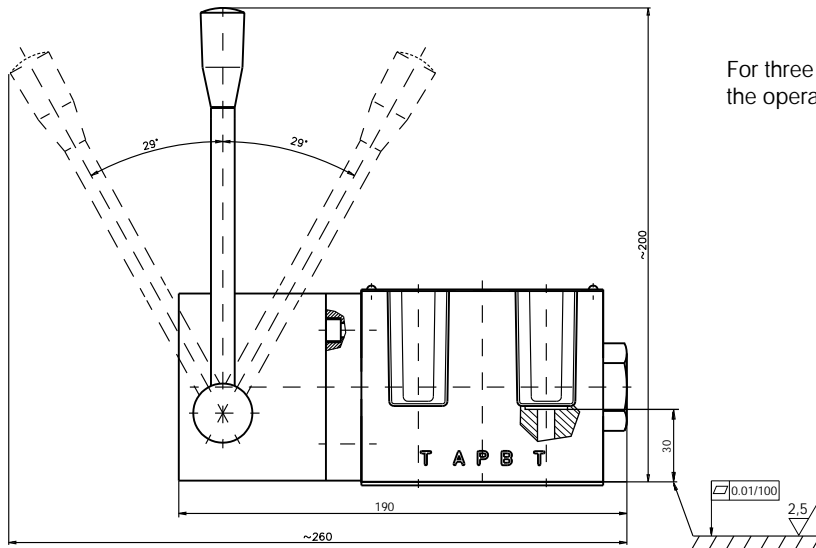
DIMENSIONS

All dimensions are shown in mm.

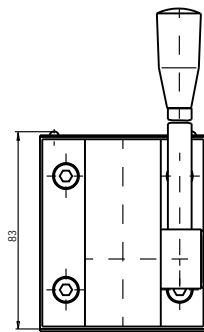


THREE POSITIONAL

Symbols 00, 01, 02, 04, 05, 06, 11, 12, 14, 17, 18, 21, 24, 26, 27, 39, 40, 41, 45, 68, 70, 83(except 61 & 62)

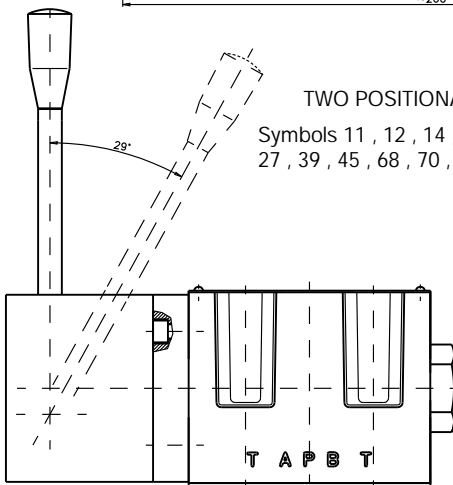


For three positional valves symbols 61 and 62 the operator is at side "b".



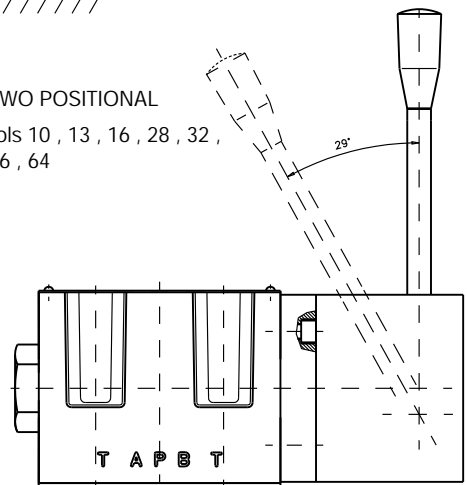
TWO POSITIONAL

Symbols 11, 12, 14, 17, 24, 27, 39, 45, 68, 70, 83

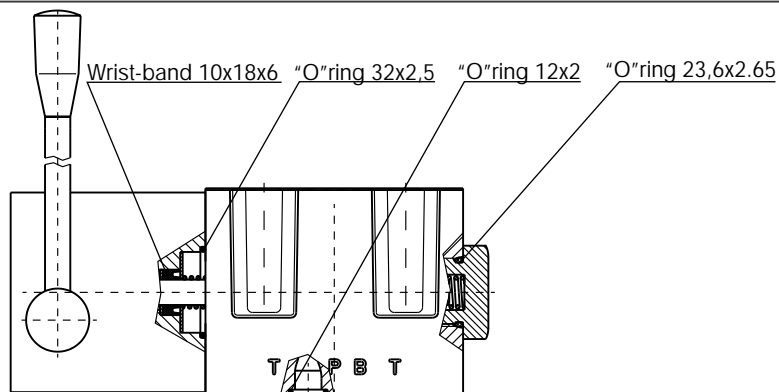


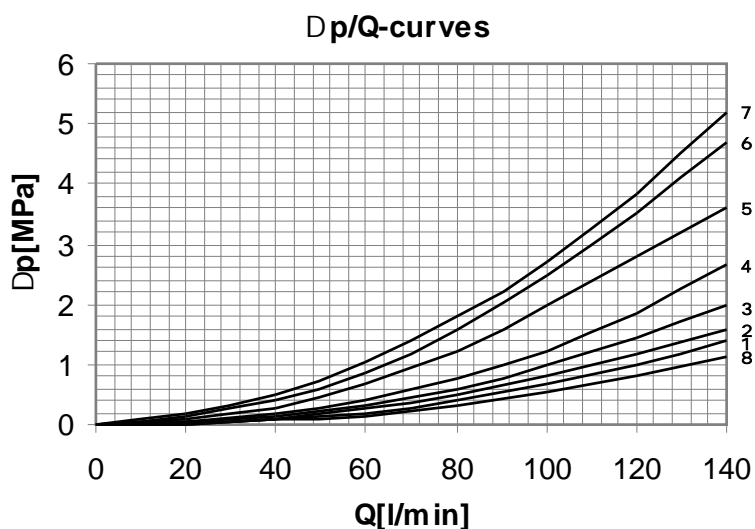
TWO POSITIONAL

Symbols 10, 13, 16, 28, 32, 33, 36, 64



SEALS

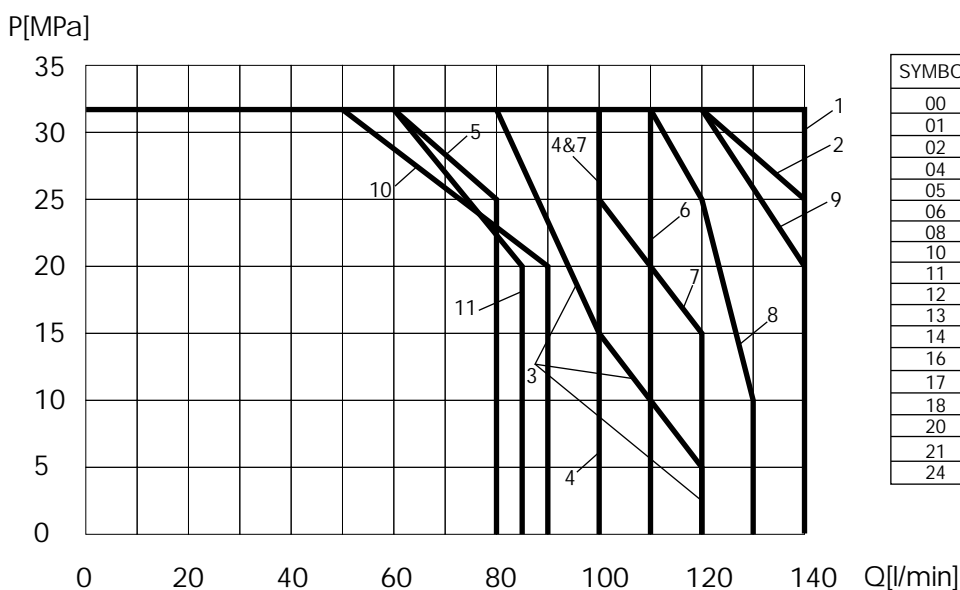


CHARACTERISTICS
Dp/Q


SYMBOL	CURVE				
	P>A	P>B	A>T	B>T	P>T
00	3	3	8	8	4
01	3	3	1	1	
02	6	6	5	5	4
04	3	3	2	2	
05	1	1	1	8	
06	2	2	7	5	2
08	2	2	1	1	
10	2	2	1	1	
11	2	2	1	1	
12	2	2	1	1	
13	2	2			
14	6			5	4
16	2			1	
17		1	1		
18	2	2	1	1	
20	3	3	2	2	
21	2	2	1	1	
24	3	3	2	2	
26	3	3	2	1	
27	3			1	
28	3	3	2	2	
32	4	4			
33		3	8		4
36	4	4	2	2	
39	4	4	2	2	
40		4	1		
41		4	8		
42	3	3	2	1	
45		2	1		
61	4			8	
62	4			1	
64	2			1	
68	4	4			
70	3	3	2	1	
83		2	1		

p/Q

The operating limit of hydraulic power shown here is for applications with two directions of flow (e.g. from P to B and simultaneously from A to T). If the valve is with one direction passage only (e.g. from P to B and with blocked port A), the operating limit may considerably be reduced. The performance limits are measured with hydraulic oil 35 ± 5 cSt, temperature 50°C and supply voltage $0,9U_N$.



SYMBOL	CURVE	SYMBOL	CURVE
00	1	26	8
01	2	27	1
02	11	28	9
04	9	32	3
05	1	33	1
06	2	36	5
08	2	39	5
10	1	40	6
11	1	41	7
12	1	42	8
13	2	45	2
14	11	61	7
16	2	62	6
17	1	64	2
18	2	68	3
20	2	70	8
21	4	83	2
24	9		